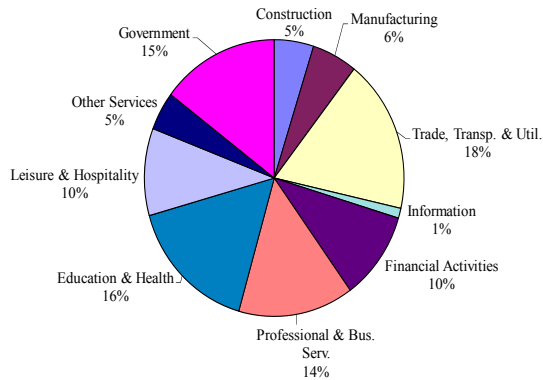


Delaware Employment Trends

- This month's jobs data mark a milestone – the 443,700 Total Nonfarm jobs in October is an all-time high for the state. This means that Delaware has finally gained back all of the 35,200 jobs lost between February 2008, the last peak, and the recessionary bottom in February 2010. It becomes the 22nd state, and first of its neighbors, to do so. The unemployment rate fell by one-tenth to 6.4 percent, as the economy is beginning to absorb the influx of jobseekers. Both the labor force participation rate and the employment to population ratio are up by 1.1 percentage points from a year ago.
- The industry composition of the state's economy has changed considerably. Construction and Manufacturing lost a combined 15,500 jobs, but only Construction has gained some back (3,200). Professional, Scientific, and Technical Services, which includes legal, accounting, engineering, and scientific research services has led the way, gaining 7,800 jobs. Health Care is just behind, adding 7,700 jobs, for a coincidental total of 15,000 jobs gained between them. Retail Trade, which lost a third-most 5,600 jobs, has gained back 3,700 of them.

Percent Distribution of Delaware Nonfarm Employment—October 2014



CONTACT: George Sharples (302)761-8060

Please Visit Our Website at: www.oolmi.net

DELAWARE DEPARTMENT OF LABOR
 Occupational and Labor Market Information
 Post Office Box 9965
 Wilmington, DE 19809-0965
 (302)761-8069
www.oolmi.net

60-01-200

OFFICIAL BUSINESS
 PENALTY FOR PRIVATE USE \$300

ATTENTION:
 If your address has changed, please return this section (with corrections noted) to the above address. Thank you.

**D
 E
 L
 A
 W
 A
 R
 E**

Monthly Labor Review

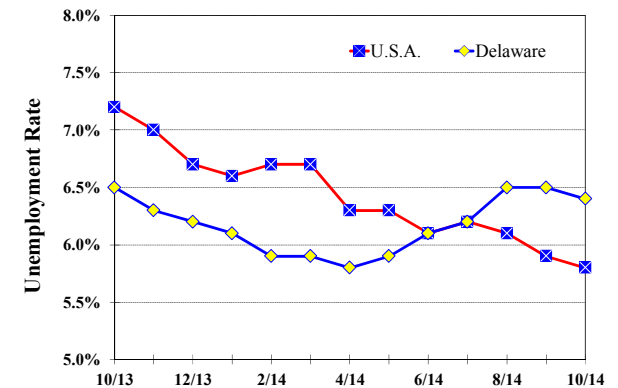
October 2014

*Delaware
 Department
 of Labor*

John J. McMahon, Jr.,
 Secretary

Unemployment Rate Delaware and U.S.A.

October 2013– October 2014



Delaware Labor Force Trends

- Delaware's seasonally adjusted unemployment rate in October 2014 was 6.4%, down from 6.5% in September 2014. There were 29,100 unemployed Delawareans in October 2014, compared to 28,900 in October 2013. The U.S. unemployment rate was 5.8% in October 2014, down from 5.9% in September 2014. In October 2013, the U.S. unemployment rate was 7.2%, while Delaware's rate was 6.5%.
- In October 2014, seasonally adjusted nonfarm employment was 443,700, up from 442,000 in September 2014. Since October 2013, Delaware's total nonfarm jobs have increased by a net gain of +12,500, a rise of 2.9%. Nationally, jobs during that period increased 1.9%.

Delaware Civilian Labor Force

	Oct. 2014	Sept. 2014	Oct. 2013
Civilian Labor Force	454,600	453,300	442,500
Employment	425,500	423,900	413,600
Unemployment	29,100	29,400	28,900
Unemployment Rate %	6.4	6.5	6.5
U.S. Unemployment Rate %	5.8	5.9	7.2

Source: Delaware Dept. of Labor in cooperation with the U.S. Dept. of Labor, Bureau of Labor Statistics.

Area Unemployment Rates (%)

	Oct. 2014	Sept. 2014	Oct. 2013
New Castle County	6.1	6.3	6.5
Wilmington	9.0	9.6	9.6
Newark	5.7	5.7	5.8
Kent County	6.1	6.5	6.5
Dover	7.3	8.0	7.8
Sussex County	5.9	5.6	6.1

Note: Area rates are not seasonally adjusted.

Source: Delaware Dept. of Labor in cooperation with the U.S. Dept. of Labor, Bureau of Labor Statistics.

Delaware Nonfarm Employment— Seasonally Adjusted (in 000s) October 2013—October 2014

INDUSTRY GROUP	Oct. 2014	Sept. 2014	Over the Month Change	Over the Year Change†
TOTAL NONAG. EMP.	443.7	442.0	1.7	12.5
CONSTRUCTION	21.8	22.2	-0.4	1.4
MANUFACTURING	25.0	25.3	-0.3	-0.1
Durable Goods *	9.3	9.3	0.0	-0.2
Nondurable Goods	15.9	16.0	-0.1	0.1
TRADE, TRANSP., & UTIL.	79.7	79.1	0.6	1.4
Wholesale Trade	12.1	12.0	0.1	-0.1
Retail Trade	52.3	52.2	0.1	0.5
Transp. & Utilities	15.3	14.9	0.4	1.0
INFORMATION *	5.2	5.2	0.0	0.1
FINANCIAL ACTIVITIES	46.0	45.6	0.4	1.7
PROF. & BUS. SERV.	63.7	63.4	0.3	4.3
EDUCATION & HEALTH	72.0	71.7	0.3	2.1
LEISURE & HOSPITALITY	45.2	44.4	0.8	0.8
OTHER SERVICES	20.0	20.4	-0.4	0.2
GOVERNMENT	65.1	64.7	0.4	0.6
Federal Government *	5.5	5.5	0.0	0.0
State Government	33.0	32.7	0.3	0.4
Local Government	26.5	26.6	-0.1	0.2

*Industries are not seasonally adjusted.

† Annual changes are not seasonally adjusted.

Details may not add up due to rounding and seasonal adjustment.

Source: U.S. Department of Labor, Bureau of Labor Statistics.

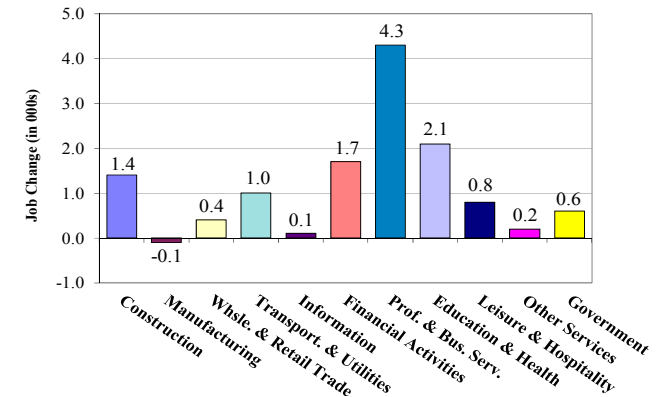
Technical note: Methodological changes mandated by the U.S. Bureau of Labor Statistics (BLS) may result in larger month-to-month changes that are the result of statistical sampling error and not actual changes in employment.

Consumer Price Index All Urban Consumers

	Percent Change to Oct. 2014 from:		
	Sept. 2014	Aug. 2014	Oct. 2013
U.S. City Average	-0.3	-0.2	1.7
Phila.-Wilm.-Atlantic City*	NA	-0.1	1.6

* Data are published on a bi-monthly basis.

Delaware Over-The-Year Job Change October 2013—October 2014



Hours & Earnings All Employee (Total Private)

	Oct. 2014	Sept. 2014	Oct. 2013
Weekly Earnings	\$715.58	\$716.10	\$707.11
Weekly Hours	32.9	33.0	32.2
Hourly Earnings	\$ 21.75	\$ 21.70	\$ 21.96

Source: Delaware Dept. of Labor in cooperation with the U.S. Dept. of Labor, Bureau of Labor Statistics.

Delaware Annual Net Job Change 1992 to 2013

