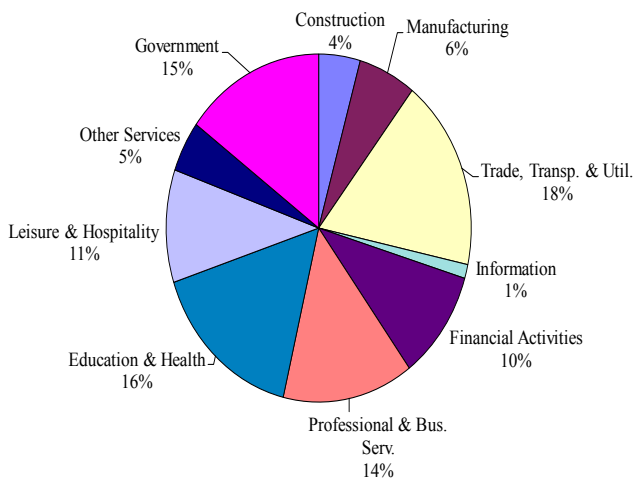


Delaware Employment Trends

- In February 2013, seasonally adjusted nonfarm employment was 425,000, down from 425,600 in January 2013. The over-the-month decrease of -600 jobs was mainly due to decreases in Construction, Manufacturing, and Education and Health.
- Since February 2012, Delaware's total nonfarm jobs have increased by a net gain of +6,600, a rise of 1.6%. Nationally, jobs during that period increased 1.5%. Over the past twelve months, the job gains in Delaware were in Professional and Business Services at +2,700, Education and Health at +1,800, and Financial Activities at +1,700. The largest over-the-year job loss was in State Government at -700.

CONTACT: George Sharpley (302)761-8060

Percent Distribution of Delaware Nonfarm Employment—February 2013



DELAWARE DEPARTMENT OF LABOR
Occupational and Labor Market Information
Post Office Box 9965
Wilmington, DE 19809-0965
(302)761-8069
www.oolmi.net

60-01-200

OFFICIAL BUSINESS
PENALTY FOR PRIVATE USE \$300

ATTENTION:
If your address has changed, please return this section (with corrections noted) to the above address. Thank you.

Please Visit Our Website at: www.oolmi.net

**D
E
L
A
W
A
R
E**

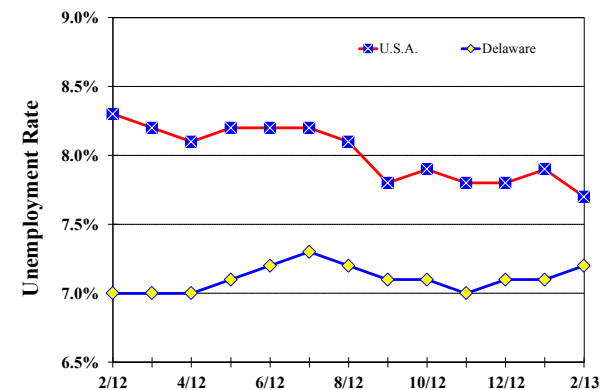
Monthly Labor Review

February 2013

Delaware
Department
of Labor
John J. McMahon, Jr.,
Secretary

Unemployment Rate Delaware and U.S.A.

February 2012– February 2013



Delaware Labor Force Trends

- Delaware's seasonally adjusted unemployment rate in February 2013 was 7.2%, up from a revised 7.1% in January 2013. There were 32,000 unemployed Delawareans in February 2013, compared to 31,200 in February 2012. The U.S. unemployment rate was 7.7% in February 2013, down from 7.9% in January 2013. In February 2012, the U.S. unemployment rate was 8.3%.

Delaware Civilian Labor Force

	Feb. 2013	Jan. 2013	Feb. 2012
Civilian Labor Force	446,200	446,200	443,000
Employment	414,200	414,300	411,800
Unemployment	32,000	31,900	31,200
Unemployment Rate %	7.2	7.1	7.0
U.S. Unemployment Rate %	7.7	7.9	8.3

Source: Delaware Dept. of Labor in cooperation with the U.S. Dept. of Labor, Bureau of Labor Statistics.

Area Unemployment Rates (%)

	Feb. 2013	Jan. 2013	Feb. 2012
New Castle County	7.2	7.4	7.2
Wilmington	9.9	10.2	10.3
Newark	6.1	6.6	5.4
Kent County	8.0	8.4	8.0
Dover	8.9	9.6	8.8
Sussex County	8.7	8.9	8.6

Note: Area rates are not seasonally adjusted.

Source: Delaware Dept. of Labor in cooperation with the U.S. Dept. of Labor, Bureau of Labor Statistics.

Delaware Nonfarm Employment— Seasonally Adjusted (in 000s) February 2012—February 2013

INDUSTRY GROUP	Feb. 2013	Jan. 2013	Over the Month Change	Over the Year Change†
TOTAL NONAG. EMP.	425.0	425.6	-0.6	6.6
CONSTRUCTION	18.7	19.0	-0.3	0.3
MANUFACTURING	25.9	26.2	-0.3	0.0
Durable Goods *	9.4	9.5	-0.1	-0.3
Nondurable Goods	16.4	16.3	0.1	0.3
TRADE, TRANSP., & UTIL.	76.0	76.4	-0.4	0.4
Wholesale Trade	12.3	12.5	-0.2	-0.2
Retail Trade	50.9	50.9	0.0	0.3
Transp. & Utilities	12.8	13.0	-0.2	0.3
INFORMATION	5.5	5.6	-0.1	-0.1
FINANCIAL ACTIVITIES	43.4	42.9	0.5	1.7
PROF. & BUS. SERV.	58.9	59.1	-0.2	2.7
EDUCATION & HEALTH	68.9	69.2	-0.3	1.8
LEISURE & HOSPITALITY	44.5	44.4	0.1	0.1
OTHER SERVICES	20.1	20.0	0.1	0.3
GOVERNMENT	63.1	62.8	0.3	-0.6
Federal Government *	5.6	5.5	0.1	0.0
State Government	31.1	31.2	-0.1	-0.7
Local Government	26.1	26.1	0.0	0.1

*Industries are not seasonally adjusted.

† Annual changes are not seasonally adjusted.

Details may not add up due to rounding and seasonal adjustment.

Source: U.S. Department of Labor, Bureau of Labor Statistics.

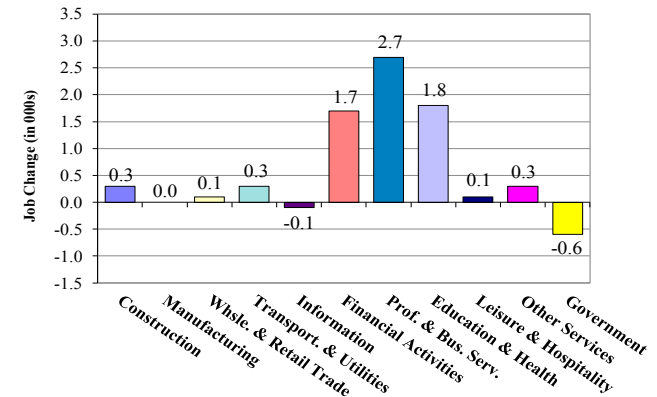
Technical note: Methodological changes mandated by the U.S. Bureau of Labor Statistics (BLS) may result in larger month-to-month changes that are the result of statistical sampling error and not actual changes in employment.

Consumer Price Index All Urban Consumers

	Percent Change to Feb. 2013 from:		
	Jan. 2013	Dec. 2012	Feb. 2012
U.S. City Average	0.8	1.1	2.0
Phila.-Wilm.-Atlantic City*	NA	0.7	1.8

* Data are published on a bi-monthly basis.

Delaware Over-The-Year Job Change February 2012—February 2013



Hours & Earnings All Employee (Total Private)

	Feb. 2013	Jan. 2013	Feb. 2012
Weekly Earnings	\$735.48	\$726.72	\$724.35
Weekly Hours	32.4	32.0	33.0
Hourly Earnings	\$ 22.70	\$ 22.71	\$ 21.95

Source: Delaware Dept. of Labor in cooperation with the U.S. Dept. of Labor, Bureau of Labor Statistics.

Delaware Annual Net Job Change 1992 to 2012

