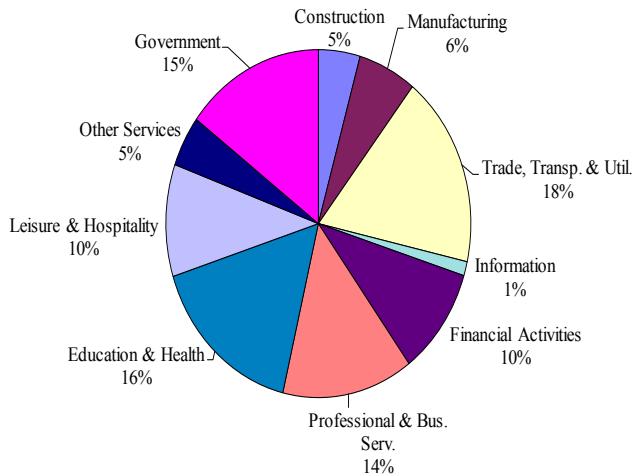


## Delaware Employment Trends

- In January 2013, seasonally adjusted nonfarm employment was 425,300, up from 421,000 in December 2012. The over-the-month increase of +4,300 jobs was mainly due to increases Professional and Business Services, and Leisure and Hospitality.
- Since January 2012, Delaware's total nonfarm jobs have increased by a net gain of +6,000, a rise of 1.5%. Nationally, jobs during that period increased 1.5%. Over the past twelve months, the job gains in Delaware were in Professional and Business Services at +2,500, Education and Health at +2,400, and Financial Activities at +1,000. The largest over-the-year job loss was in State Government at -1,300.

CONTACT: George Sharpley (302)761-8060

### Percent Distribution of Delaware Nonfarm Employment—January 2013



DELAWARE DEPARTMENT OF LABOR  
 Occupational and Labor Market Information  
 Post Office Box 9965  
 Wilmington, DE 19809-0965  
 (302)761-8069  
 www.oolmi.net

60-01-200

OFFICIAL BUSINESS  
 PENALTY FOR PRIVATE USE \$300

**ATTENTION:**  
 If your address has changed, please return this section (with corrections noted) to the above address. Thank you.

Please Visit Our Website at: [www.oolmi.net](http://www.oolmi.net)

**D  
 E  
 L  
 A  
 W  
 A  
 R  
 E**

# Monthly Labor Review

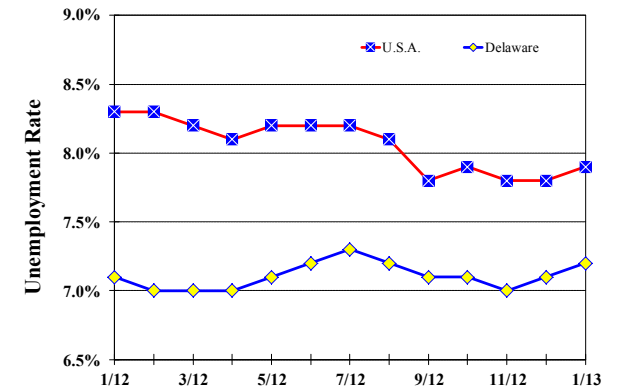
January 2013

Delaware  
 Department  
 of Labor

John J. McMahon, Jr.,  
 Secretary

### Unemployment Rate Delaware and U.S.A.

January 2012 - January 2013



## Delaware Labor Force Trends

- Delaware's seasonally adjusted unemployment rate in January 2013 was 7.2%, up from revised 7.1% in December 2012. There were 32,000 unemployed Delawareans in January 2013, compared to 31,400 in January 2012. The U.S. unemployment rate was 7.9% in January 2013, up from 7.8% in December 2012. In January 2012, the U.S. unemployment rate was 8.3%.

## Delaware Civilian Labor Force

	Jan. 2013	Dec. 2012	Jan. 2012
Civilian Labor Force	446,400	446,400	442,700
Employment	414,400	414,800	411,300
Unemployment	32,000	31,600	31,400
Unemployment Rate %	7.2	7.1	7.1
U.S. Unemployment Rate %	7.9	7.8	8.3

Source: Delaware Dept. of Labor in cooperation with the U.S. Dept. of Labor, Bureau of Labor Statistics.

## Area Unemployment Rates (%)

	Jan. 2013	Dec. 2012	Jan. 2012
<b>New Castle County</b>	7.5	6.7	7.0
Wilmington	10.6	9.9	10.1
Newark	6.6	5.6	5.9
<b>Kent County</b>	8.5	7.2	8.1
Dover	9.8	8.3	9.3
<b>Sussex County</b>	9.0	7.6	8.6

Note: Area rates are not seasonally adjusted.

Source: Delaware Dept. of Labor in cooperation with the U.S. Dept. of Labor, Bureau of Labor Statistics.

## Delaware Nonfarm Employment— Seasonally Adjusted (in 000s) January 2012—January 2013

INDUSTRY GROUP	Jan. 2013	Dec. 2012	Over the Month Change	Over the Year Change†
<b>TOTAL NONAG. EMP.</b>	425.3	421.0	4.3	6.0
<b>CONSTRUCTION</b>	18.8	18.4	0.4	0.4
<b>MANUFACTURING</b>	26.2	25.6	0.6	0.3
Durable Goods *	9.5	9.7	-0.2	-0.1
Nondurable Goods	16.3	16.3	0.0	0.4
<b>TRADE, TRANSP., &amp; UTIL.</b>	76.3	76.3	0.0	0.3
Wholesale Trade	12.5	12.3	0.2	-0.2
Retail Trade	50.8	51.2	-0.4	0.1
Transp. & Utilities	13.0	12.8	0.2	0.4
<b>INFORMATION</b>	5.6	5.4	0.2	-0.1
<b>FINANCIAL ACTIVITIES</b>	42.7	42.5	0.2	1.0
<b>PROF. &amp; BUS. SERV.</b>	59.0	57.8	1.2	2.5
<b>EDUCATION &amp; HEALTH</b>	69.5	69.0	0.5	2.4
<b>LEISURE &amp; HOSPITALITY</b>	44.3	43.3	1.0	0.2
<b>OTHER SERVICES</b>	20.1	19.9	0.2	0.4
<b>GOVERNMENT</b>	62.8	62.8	0.0	-1.4
Federal Government *	5.5	5.6	-0.1	-0.2
State Government	31.2	31.2	0.0	-1.3
Local Government	26.1	26.0	0.1	0.1

\*Industries are not seasonally adjusted.

† Annual changes are not seasonally adjusted.

Details may not add up due to rounding and seasonal adjustment.

Source: U.S. Department of Labor, Bureau of Labor Statistics.

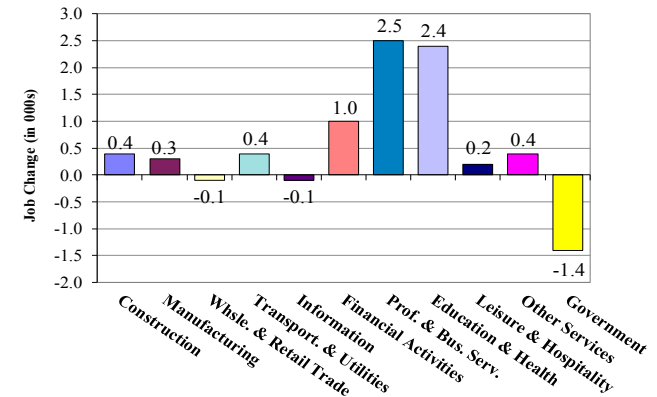
Technical note: Methodological changes mandated by the U.S. Bureau of Labor Statistics (BLS) may result in larger month-to-month changes that are the result of statistical sampling error and not actual changes in employment.

## Consumer Price Index All Urban Consumers

	Percent Change to Jan. 2013 from:		
	Dec. 2012	Nov. 2012	Jan. 2012
<b>U.S. City Average</b>	0.3	0.0	1.6
<b>Phila.-Wilm.-Atlantic City*</b>	NA	NA	NA

\* Data are published on a bi-monthly basis.

## Delaware Over-The-Year Job Change January 2012—January 2013



## Hours & Earnings All Employee (Total Private)

	Jan. 2013	Dec. 2012	Jan. 2012
<b>Weekly Earnings</b>	\$727.96	\$756.51	\$743.76
<b>Weekly Hours</b>	31.9	33.4	33.1
<b>Hourly Earnings</b>	\$22.82	\$22.65	\$22.47

Source: Delaware Dept. of Labor in cooperation with the U.S. Dept. of Labor, Bureau of Labor Statistics.

## Delaware Annual Net Job Change 1992 to 2012

