

PENN CINEMA OFF TO SOLID START

Penn Cinema Riverfront is faring well in the early going.

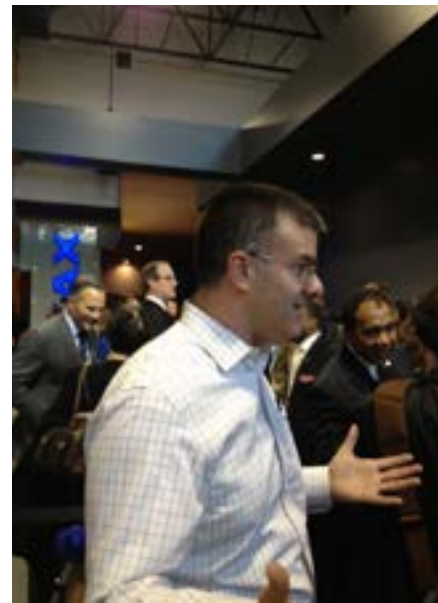
The 14-screen theater in Wilmington is on track to draw 600,000 patrons in its first year, according to owner Penn Ketchum.

See Film Festival story, Page 2

Ketchum spoke last week at a kick-off event for [WilmFilm](#), slated for late April. The new film festival will be based in three theaters at Penn Cinema, which is adjacent to restaurants, apartments and condominiums.

Ketchum is confident the cinema complex, which opened two months ago, can attract 750,000 customers a year. That would put it in the top 15 in the region as measured by attendance.

The original [Penn Cinema](#) in Lititz, Pa. Ranks in



Penn Ketchum.

the top 15, despite its location outside Lancaster. The new theater complex features stadium seating that allows an unobstructed view of the screen. The theater does not use the conventional box office. Instead, tickets are purchased at self-service terminals or at the concession stand.

Like its Lancaster-area counterpart, Penn Cinema Riverfront features an IMAX theater that will not see nearby competition, Ketchum says. No IMAX complex can be built within 15 miles of

another.

Penn Cinema will see another competitor off I-95 in 2014 when theater giant Cinemark opens in 2014 in a complex at the edge of the Christiana Mall property southeast of Newark.

Continued on next page

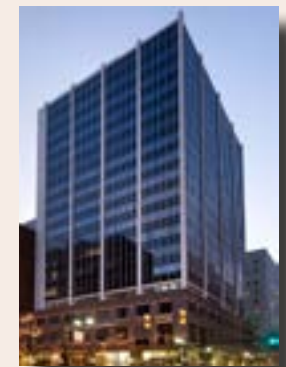
This week

A job fair is coming to Newark on Wednesday



The Kitchen is cooking up videos in downtown. 4

Law firm adds space in lease renewal in downtown. 9



Southern soft drink makes its way north. 16

Penn Cinema...

From previous page

Ketchum said cinema staff has spent the last two months making certain that patrons have a good experience. According to Ketchum, the two Penn cinemas will not resort to discount pricing or other promotions to draw customers.

“We set fair price,” he says, adding that the matinee and evening tickets are competitive with other theaters in the area.

At the film festival kick-off event, Ketchum made a pitch for local businesses to advertise at the Wilmington theater complex.

Unlike large theater chains, Penn Cinema Riverfront wants to focus on local companies and organizations.

The riverfront theater already has a close relationship with the nearby Delaware Children’s Museum, Ketchum says.

While Penn Cinema Riverfront will host WilmFilm,, there are no plans to show independent and documentary films that are mainstay of such events. Ketchum remembers being asked to show a much-discussed film in Lititz that ended up drawing only a few patrons.

Wilmington also has Theatre N, a venue for independent films in downtown, Ketchum says.

WilmFilm coming to riverfront

More details have been released on WilmFilm. The film festival is slated for April 25 to 28 at the new Penn Cinema complex on the Wilmington Riverfront.

Festival organizer Barry Schlecker of Barry’s Events and Penn Cinema hosted a preview event for the media and nonprofit community last week.

Schlecker founded the Newark Film Festival and revived the Brandywine Arts Festival.

The festival will be held at three of the 14 screens at the movie complex that opened late last year.

According to Schlecker, the festival will feature 15 independent movies that probably won’t make their way to bigger screens.

Schlecker took note of the growing length of many new films, but said he plans to look for offerings of two hours or less.

A list of movies and online tickets are expected to be available in mid-March.

Schlecker said WilmFilm will a festival atmosphere that will include offerings from food



WilmFilm producer Barry Schlecker.

trucks and perhaps wine, depending on local alcohol beverage regulations.

WilmFilm will feature a kick-off event at the Penn Cinema IMAX theater benefitting Easter Seals of Delaware and the Eastern Shore of Maryland.

Sponsorships and advertising opportunities are still available for the event. Schlecker hopes to see some sellouts at this year’s festival.

The festival has room to grow, since it is a fraction of the size of the Rehoboth Beach Independent Film Festival. The festival in the coastal community is held in November.

Continued on next page

Job fair coming to Newark on Wednesday

U.S. Senators Tom Carper and Chris Coons, and U.S. Representative John Carney announced that nearly 50 employers from around the region have already signed up for their New Castle County job fair on Wednesday, March 6,

Combined, the employers are hiring for about

Film festival...

From previous page

Non-profits and businesses also have the opportunity to sponsor films at the Wilmington festival.

The Wilmington festival comes after Schlecker decided to not hold another Newark Film Festival. A combination of factors that included the condition of the movie complex and a growing number of festivals organized by Schlecker led to the decision to discontinue the event.

Schlecker said he hopes to return to Newark with an event, "sometime down the road." perhaps in 2013.

600 open positions in a variety of areas.

The New Castle County job fair is being organized with Brandywine Consulting and will be held at the Embassy Suites in Newark from 10 am to 2 p.m,

Employers already registered for the fair include:

Private Companies: Advanced Student Transportation, Telamon Corporation (Head Start), Bayada Home Care, Griswold Special Care, Home Instead Senior Care, Interim Healthcare, AFLAC, AVON, Dr. Energy Saver (Delmarva Energy), Metro Merchant Services, Prominent Insurance, Viridian Energy, APM Inc., Prince Telecom, Playtex, Markatos Services Inc., AAA Club Partners, Discover Financial Services, Goodwill of Delaware, Metro Merchant Services, SafeLink Wireless, American Registry of Pathology, Beasley Broadcast Group, Massage and Reflexology of Delaware, New Behavioral Network, Tech Impact, WSFS Bank, Bank of America, Citi, Diamond State Financial Group, New York Life, Sallie Mae, Waddell and Reed Inc.

Government Agencies: U.S. Department of Homeland Security, U.S. Department of Housing




and Urban Development, U.S. Immigration and Customs Enforcement Homeland Security Investigations, Delaware National Guard, State of Delaware, Delaware Department of Transportation, State of Delaware Office of Volunteerism, New Castle County Government, Dover Police Department, New Castle County Police

Additionally, the following organizations will have tables at the fair on their offerings for job seekers:

University of Delaware Transition to Teaching Partnership, Alternative Routes to Teacher Certification, Delaware Department of Labor/Vocational Rehabilitation Division, Delaware Department of Labor, Clarifi, Right Management.

In addition to networking with employers looking to hire, job seekers will also be able to participate in job-search skills workshops, career counseling, and have their resumes reviewed by experts.

Carper, Coons, and Carney will host additional job fairs in Sussex County in April and in Kent County in June.

For more information on how to participate as a job seeker, call 302-573-6345 or email workshop@coons.senate.gov. 

The Kitchen seeks bigger slice of local video pie



The Kitchen has joined the arts and business area at 227 N. Market St. in Wilmington's LOMA district.

The business held a grand opening/open house on Friday night that was attended by Gov. Jack Markell,

Delaware Economic Development Office Secretary Alan Levin, and other business and community leaders.

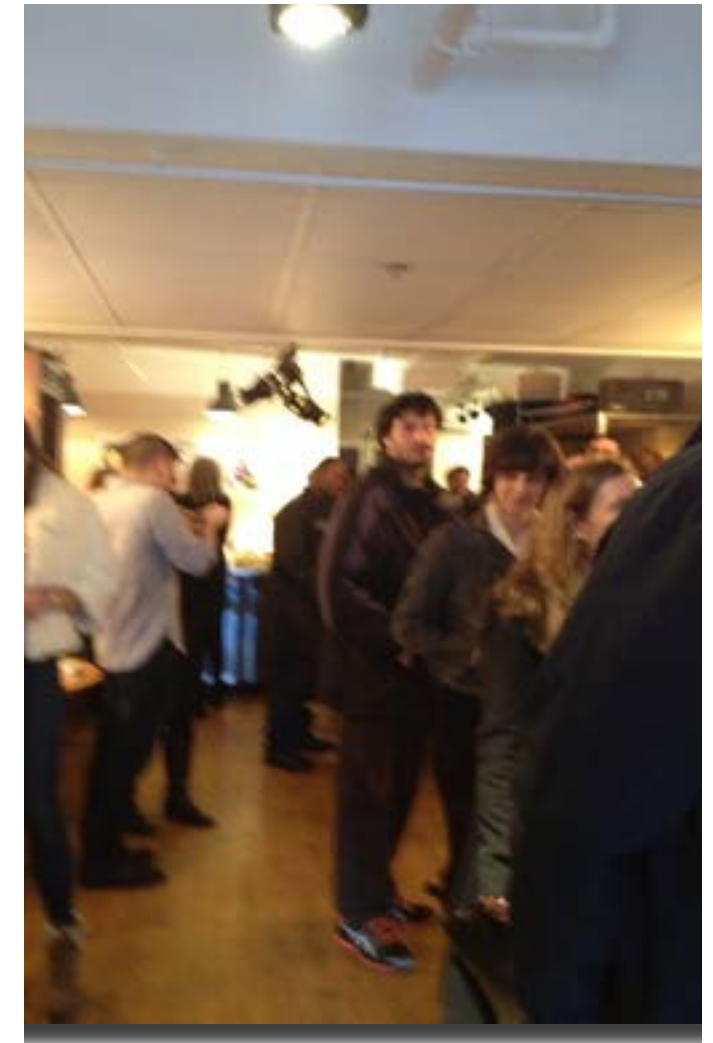
The opening was also part of the monthly Art Loop event in the city.

The business specializes in short films for businesses and nonprofit organizations. Clients have included the United Way of Delaware, the Delaware College of Art and Design and the YMCA of Delaware.

Phillips said the location and attractive rental figure allowed the company to move into the new space.

The company that came out of the coIN Loft, a business development and shared space company also based in Wilmington.

Continued on next page



The Kitchen opens in LOMA district

From previous page

Coin Loft also moved to new quarters a few blocks away from The Kitchen.

Markell and Levin have been active in promoting the LOMA district and efforts to bring business to the area. In January, they were part of a ribbon cutting at the new location of the Coin Loft and Start It Up Delaware, a business development program that received funding from the state.

Miller says the challenge for The Kitchen is to increase awareness about the capabilities of local production companies in producing high-quality video.

Currently, businesses often turn to companies from outside the area for video work, he added.



About the Business Bulletin

The Delaware Business Bulletin is the companion weekly electronic business journal publication to the [DelawareBusinessDaily](#). The Business Bulletin is delivered via email and currently operates as a non-commercial business publication.

Artesian seeks wastewater rate hike for southern Delaware developments

Artesian Wastewater Management, Inc. is seeking a rate increase that if approved would affect residents in a number of southern Delaware developments. The utility says the money is needed to fund improvements and cover increased costs.

Artesian has invested \$17.3 million for wastewater system improvements over the last several years, but has not filed for a rate increase since the systems went into operation. The request will go before the Delaware Public Service Commission.



If granted in full, the request would increase the flat charge for residential wastewater service from \$75 per month per residence to \$98 per month. Artesian Wastewater serves Stonewater Creek, Heron Bay, Beaver Creek, Reserves at Lewes Landing and Southfield in southern Delaware. It will provide service in the near future to Shoreview Woods and Windstone.

"This rate request is driven by the millions of

dollars in investments we have made to ensure our customers have safe, reliable wastewater service that meets the increasingly stringent standards established by the U.S. Environmental Protection Agency and the Delaware Department of Natural Resources," said Dian C. Taylor, CEO of Artesian Resources. "We have developed regional wastewater systems that are protecting our precious groundwater resources and eliminating the need for individual septic systems in an environmentally sensitive area of our state."

Infrastructure improvements in progress or recently completed include \$1.5 million for the second phase of construction of the wastewater treatment facility at Beaver Creek; \$460,000 for collection sewers that connect Windstone to the Beaver Creek system and \$590,000 for pump station upgrades and construction.

Artesian, based near Newark, is primarily a water utility, with its largest operation in New Castle County. Artesian Wastewater Management, Inc. was organized in July 2005 and owns and operates five wastewater facilities in southern Delaware.




AstraZeneca reports promising results

AstraZeneca reported promising results from a lengthy safety trial of naloxegol on patients with non-cancer related pain and suffering from constipation from using opioids such as morphine.

“These high-level results are similar to the safety results seen in the Phase III studies previously reported and provide further confidence in the data we’ve seen to date for naloxegol,” said Briggs Morrison, M.D., executive vice president, global medicines Development, AstraZeneca. “We have now completed our core Phase III program and we are pleased to advance naloxegol toward a regulatory submission later this year.”

A New Drug Application filing in the US and a Marketing Authorization Application (MAA) filing in the European Union are planned for the third quarter of 2013, pending AstraZeneca’s final preparation of the registration package and a meeting with the FDA.

Naloxegol is part of the exclusive worldwide license agreement made in 2009, between AstraZeneca and Nektar Therapeutics. 



Fox Rothschild group adds 3,000 square feet at Citizens Bank Center

Keystone Property Group, announced that [Fox Rothschild LLP](#) signed an 11-year lease for 20,184 square feet on the second and third floors at Citizens Bank Center, an 18-story, 221,686-square-foot office building at 919 North Market Street in downtown Wilmington.

A tenant of the building for 15 years, Fox Rothschild had occupied about 17,000 square feet on two non-contiguous floors. With this transaction, the firm gains the opportunity to have contiguous space on two floors with an interconnecting staircase, as well as a private lobby and elevator off the building's main lobby on the first floor.

Growth at the firm's bankruptcy practice was cited as the reason for the expansion. Citizens Bank Center is the closest building to the U.S. Bankruptcy Court on Market Street.

"Fox Rothschild now has the ability to create a new, modern office environment to better

serve its growing base of clients," said Richard S. Gottlieb, senior vice president of Keystone Property Group. "The unique features of the space, along with its unparalleled downtown location near the courthouse, were both major factors in securing this expansion and renewal."

Doug Simon of Newmark Grubb Knight Frank represented Fox Rothschild in the transaction. This national law firm has more than 500 attorneys practicing in 17 offices coast to coast. The firm provides legal services to public and private companies and also represents charitable, medical and educational institutions both in the United States and in more than 50 countries.

"This building is the ideal location for our expanding Delaware practice, and we are pleased that Keystone was able to accommodate our current and future space needs with this transaction," said Mark L. Silow, managing partner at Fox Rothschild.

Continued on next page



STATE DELEGATION AIMS TO REVIVE OFFSHORE WIND

Sens. Tom Carper and Chris Coons and Rep. John Carney (all D-Del.) introduced the Incentivizing Offshore Wind Power Act to provide financial incentives for investment in offshore wind energy.

The legislation would provide the offshore wind industry with enhanced stability by extending investment tax credits for the first 3,000 megawatts of offshore wind facilities placed into service, which is an estimate of 600 wind turbines.

The tax credit appears to be aimed at encouraging a system of wind farms that are connected to one another by a power grid. Research has indicated that if one area loses wind, the slack can be picked up by another. Wind are also more constant in offshore areas.

Law firm adds to lease at Citizens Bank Center

From previous page

“We are confident that this new space will facilitate a more seamless business operation for our firm as we continue our growth.”

Keystone, which owned 919 North Market Street from 2002 through 2005, purchased the building in late 2011 for \$22 million. It has done work on



Efforts to move offshore wind projects forward have been hampered by a weak economy and a Congress unwilling to go along with the tax breaks.

At present, Delaware’s Bluewater Wind offshore project remains largely abandoned. Many Delmarva Power customers were not happy with a previous deal that would have added a charge to bills for the higher cost of wind power. Backers of offshore wind

the elevators commons corridors and rest rooms. The building has 40,000 square feet available. Other tenants are Wells Fargo; GEICO; Ballard Spahr, LLC; Klehr Harrison Harvey Branzburg LLP; and Pachulski Stang Ziehl & Jones.

For more information on Keystone, [click here](#)



say the cost gap would lessen as the cost of other power sources goes up and the costs of wind remain stable or drop.

The opposition in Delaware has been led by the Caesar Rodney Institute, which has pushed for natural gas power plants. Other opponents have expressed concerns about the effect of massive wind farms on bird populations.

Support for wind power may have grown of late after Superstorm Sandy struck New Jersey and New York. The storm led to growing concern about climate change and what some see as ties to global warming and coal-fired power plants;

According to the release from the delegation, the tax credits are vital because of the longer lead time for the permitting and construction of offshore wind turbines, compared to onshore wind energy. Once awarded a tax credit, companies would have five years to install the offshore wind facility. Companies would not be able to receive other production or investment tax credits in addition to the offshore wind investment tax credit, according to a release from the delegation.

“Developing wind energy off our nation’s shores, especially in places like Delaware, is a critical part of

Continued on next page

Delegation says wind power would create jobs

From previous page

boosting American energy independence and jump starting our clean energy economy,” said Carper. “Offshore wind is a true ‘win-win-win’ – it is cleaner for our environment, reduces our dependence on fossil fuels and foreign energy, and helps create jobs. If we want to harness this untapped, domestic energy source, providing investment tax incentives for our country’s first offshore wind projects is essential. Our bill would do just that.”

“Wind energy generated off our shores has the potential to strengthen domestic energy production, lower energy costs, and create jobs,” Coons said. “This bill will help get turbines moving and, in conjunction with other policies, could help get the first generation of offshore wind projects providing clean, sustainable electricity to our communities.”

“As Congress works to responsibly reduce our deficit, we need to continue to maintain important investments in areas critical to economic growth, like renewable energy, manufacturing and job training programs,” said Carney. “Offshore wind power is a rapidly growing industry around the world. By incentivizing companies to develop

University of Delaware research says an East Coast system of wind farms could provide much of the power for the region.



offshore wind operations in the United States, we will reduce our dependency on foreign oil, while creating good-paying manufacturing jobs right here in Delaware. “


The legislation defines offshore facilities as any facility located in the inland navigable waters of the United States, including the Great Lakes, or in the coastal waters of the United States, including the territorial seas of the United States, the exclusive economic zone of United States, and the outer Continental Shelf of the United States.

Offshore wind offers enormous potential for producing clean domestic energy and helping create good jobs in areas located close to large population centers along the coasts, the release noted.

Because offshore wind blows faster and more uniformly at sea than the wind on land, it is a massive untapped resource for clean American power. According to the University of Delaware, the winds off the Atlantic Coast have the potential of generating 330 Gigawatts of power., the release stated.

That is enough power to replace about 300 dirty, large coal plants and enough power to support nine states from Massachusetts to North Carolina. Additionally, building and operating these wind farms would create economic opportunities along our coasts.

Since 1991, 50 projects have gone into operation in European countries since 1991. Based on experience in Europe, offshore wind project can create up to 1,500 jobs in construction and operation and maintenance alone, the release noted.

A number of proposed offshore wind projects are moving through the development process, including projects in Massachusetts, Rhode Island, New Jersey and Maine. Projects have also been discussed off the shores of Maryland and the Great Lakes states. 

Controversy simmers over possible port deal

The controversy continues to simmer over negotiations between the state and oil shipping giant Kinder Morgan over a plan to privatize the Port of Wilmington.

Gov. Jack Markell did sign a bill that gives legislators some oversight over any deal, but that has not stopped critics from firing back.



Doug Rainey

The point of view has been outlined in the Delaware Liberal website. Here's a [recent post](#).

The administration, which been cautious about privatizing state operations, seems to believe that a private operator would do a better job. But the biggest issue seems to be debt.

The port is in need of more investment and the state is concerned about risking its top rating with Standard & Poor's and other rating services.

The unhappiness among critics probably dates back to the 1990s when the port was operated by the City of Wilmington.

As the city continued to struggle with its finances, the state agreed to manage the port.

Over the years, the port had an outsized role in the economy and social fabric of the city, supplying jobs for residents, including those having difficulty in finding employment, sometimes due to a brush with the law.

The attacks of 9-11 changed all that and workers now have to undergo screening before working the docks.

Moving to a private operator has raised a number of questions, including how Kinder Morgan would deal with a big part of the port's business, fresh produce. Other ports managed by Kinder Morgan focus on bulk materials and petroleum products.

Another worry is how much money the company would actually invest in the port. The concerns are legitimate, but scratch the surface and it is likely that any deal would be unacceptable to the most ardent foes of Kinder Morgan.

State's ranking gets attention

It was good to see that the largest newspaper in the state took note of Delaware's No. 2 ranking among the 50 states when it comes to

competing in the global economy. Also if you read this column before 2 p.m. today, check out the Rick Jensen Show on WDEL 1150 AM.

Felicia Pulliam, deputy director of the Delaware Office of International Trade and Development, Rebecca Faber, president of the World Trade Center of Delaware will discuss the report.

Getting the story out about the ranking is important at a time when the ability to compete in the global marketplace is more important than ever.

The report from the Information Technology and Innovation Foundation was released in late January. The Bulletin and the DelawareBusinessDaily.com website were the first to report the news. Here's a link to the [original story](#).

More shareholder suits return to state

More fights related to corporate takeovers are returning to Delaware. Cornerstone Research reported last week that Chancery saw a larger share of lawsuits in 2012 than in previous years. A larger share of lawsuits had been moving to state and federal courts in

Continued on next page

More merger lawsuits return to Delaware Chancery Court

From previous page

previous years, a worrisome development for the state's legal community.

Lawsuits seem to be built into merger and acquisition deals, with Law360 reporting that 96 percent of deals north of \$500 million end up with some sort of litigation.

Some of this may be due to the fact that many deals these days do not come with a huge premium over the previous stock price of the acquired company.

Few shareholders are unhappy when the acquiring company pays double the current stock price.

Fish fries and Burger King

Those of us who lived around the Great Lakes have enjoyed Friday fish fries. The feasts grew out of meatless Fridays in a region with a large Catholic population.

This month, barbecue chain Famous

Dave's is offering fish fries at its two northern Delaware restaurants.

Famous Dave's actually has its roots in the Great Lakes area (its first restaurant opened in northern Wisconsin). The publicly traded company also uses promotions to build sales beyond its barbecue offerings.

Another restaurant operator, Cracker Barrel, learned a lesson about the popularity of fish fries when it found that few customers showed up on Friday nights. A fish fry was quickly added.

On the fast food side, Burger King is working on a comeback on DuPont Highway in New Castle.

Unlike McDonald's, which typically keeps its restaurants open during renovations, the airport Burger King was closed.



I CAN'T MISS WORK BECAUSE OF THE FLU.

For more information, visit <http://www.cdc.gov/flu>

Every year, I get my flu vaccine to protect myself, my coworkers, and my family from getting sick from the flu.

Even healthy people can get the flu, and it can be serious. This season, protect yourself and those around you by getting a flu vaccine.



U.S. Department of Health and Human Services
Centers for Disease Control and Prevention

CHRISTIANA CARE MAKES TOP HOSPITALS LIST

An independent analysis of the quality, safety and efficiency of care provided by nearly 3,000 hospitals across the country rates [Christiana Care](#) Health System in the top 100.



In the 100 Top Hospitals list released by Truven Health Analytics (formerly Thomson Reuters), Christiana Care is one of only 15 major teaching hospitals to place.

Christiana Care was the only hospital in Delaware and one of only two in the Philadelphia region to make the list. Christiana Care also received the honor in the year 2000.

The award recognizes the 100 Top Hospitals that have achieved excellence in 14 areas, including patient outcomes, patient safety, treatment standards, patient satisfaction, efficiency and financial stability. The study compares hospitals only against similar facilities in terms of size and teaching status.

“This honor is a tribute to our doctors, nurses and frontline staff who transform care every day,” said Robert J. Laskowski, M.D., Christiana Care president and CEO. “Such recognition fundamentally speaks to our commitment to serve our neighbors as respectful, expert caring partners in their health.”

Researchers based the 100 Top Hospitals on public information - Medicare cost reports, Medicare Provider Analysis and Review (MedPAR) data, and core measures and patient satisfaction data from the Centers for Medicare and Medicaid Services (CMS) Hospital Compare website. Hospitals do not apply, and winners do not pay to market the honor. Truven Health reports that 100 Top Hospitals outperform their peers by



EP Henry honors local firm
Wilmington-based contractor, Evergreen Hardscaping Inc., was recently recognized as the winner of the 2013 EP Henry Contractors' Choice Award for Veteran of the Year. Pictured from left to right: Eric Long, president of EP Henry, Scott Berry, owner of Evergreen Hardscaping, Inc, Shane Robinson, a sales representative at EP Henry.

demonstrating excellence and operating effectively across all functional areas.

Based on comparisons between the study winners

Continued on next page

Gordon proposes ethics reform measures

New Castle County Executive Thomas P. Gordon will introduce an ethics reform package.

Gordon reported he worked with County Chief Administrative Officer David Grimaldi, Councilman Bob Weiner and Council President Chris Bullock in drafting the measures.

The information will be posted on our newly created web page, www.nccde.org/open, which already contains 2013 contract data.

“I am pleased to collaborate in this bipartisan initiative to foster good government and transparency in County government” said Weiner.

The proposal calls for disclosure of campaign contributions by those who want to do business with the county.

“The goal of this ethics reform package is to restore public confidence in certain aspects of county government,” said Bullock. “The proposals in this reform package are ambitious

and achievable through bipartisan cooperation and through cooperation between the council and the administration. I am also particularly interested in promoting fairness in our procurement process for minority vendors.”

The annual Statements of Financial Interests filing will be expanded, clarified and made publicly available, on the County website, for all who are required to file.

Similar to the banking sector, the Department of Land use will be placed under the oversight of a compliance manager, who will be tasked with monitoring the communications of land use employees while ensuring compliance with state and county codes.

The proposal seeks to expand and reorganize the Office of the County Auditor by raising the number of auditors from one to three full time employees and changing its reporting structure to include both the executive and legislative branches of government. The new audit department will create and maintain proper internal controls throughout the other operating departments.

Christiana in ranks of top 100 hospitals

From previous page

and a peer group of similar high-volume hospitals that were not winners, they found that if all hospitals performed at the level of this year’s winners:

- More than 164,000 additional lives could be saved.
- Nearly 82,000 additional patients could be complication free.
- \$6 billion could be saved.

- Typical patients could be released from the hospital half a day sooner.

The analysis is based on Medicare patients. If the same standards were applied to all inpatients, the impact would be even greater, according to a Christiana Care release.



Claymont Community Center announces collaborations

Claymont Community Center is collaborating with numerous groups to help businesses, families, kids, and immigrant adults.

CCC offers a one-stop-shop for social, educational, and recreational services, and they are in the midst of preparing four new activities to further benefit the community.

The first is a partnership with Delaware Financial Literacy Institute, the Money School and Capital One to create the Center for Business Growth. The goal is to provide four startup and emerging small businesses with the critical entrepreneurship and financial skills necessary for business success.

These groups will receive instructional classes and workshops, have access to affordable, professional

office space with furniture and equipment, internet and phone service, a reception area, mail service, meeting rooms, and access to business resources.

The second collaboration is with Christiana Health Care System, who has created a program called Health Ambassadors. This program provides community liaisons to pregnant women, along with moms and dads of young children, to connect them with resources in the community to help raise a healthy family.

The program promotes good health before pregnancy and provides information to help prevent premature births, a leading cause of death in newborn babies.

Another initiative is the Center's ESOL program

Continued on next page



Wells Fargo donation

Wells Fargo Bank senior vice president Douglas Griese (right) presents a check for \$4,000 to Special Olympics Delaware executive director Ann Grunert (left) and Adam's Angels athletes Bernard Reynolds and Maura Siebold. Wells Fargo sponsors the softball venue at the annual Summer Games." (photo by Jon Buzby)

Click here to get the Business Bulletin delivered weekly to your email In box.

NOT FOR PROFIT

From previous page

for immigrant adults. ESOL stands for English for Speakers of Other Languages. The goal is to provide day and evening instructional classes for individuals wishing to learn to speak, read, and write English. Four levels of instructional classes are available.

Typically, each course level consists of 32 (one hour) sessions, twice a week for 16 weeks. The cost is \$75 per course and includes a take home study guide and CD. Scholarship assistance is available. One group working with us on this project is the Indo-American Association of Delaware.

Finally, the fourth new initiative is summer camps for school-age children, which will be facilitated by New Castle County. A variety of full or half-day recreation and sport camps will be conducted on the Center's fields throughout the summer.

Law school dean to be honored

Best Buddies Delaware and the BlueGold All-Star Basketball Games will recognize Dean Linda Ammons of Widener Law School with its Community Leadership Award at the BlueGold All-Star Basketball Games on Saturday, March 16 at 3 p.m. at the Bob Carpenter Center. The annual award recognizes a Delawarean's contribution to the community.

Ammons is the first woman and the first African American to lead Widener University School of Law, and is the senior African American female dean in the nation. Ammons came to Widener in 2006 from Cleveland-Marshall College of Law in Cleveland, Ohio, where she was associate dean and professor of law.

Ammons has served on the faculty of the National Judicial College since 1993. In 2010, she was named to the Legal Education Development Committee of the American Bar Association, and she recently completed three years' service as Chair of the Curriculum Committee of the American Bar Association's Section of Legal Education & Admissions to the Bar. Ammons served a three-year term on the Government Relations Committee of the Association of American Law Schools and is a member of the Advisory Boards of the Women Deans' Databank and the Minority Deans' Databank.

In January 2010, Ammons was appointed by Delaware Gov. Jack Markell to be the special investigator in the case of pediatrician Earl Bradley. Her work resulted in a package of nine legislative reforms that were passed unanimously by the General Assembly.

Comcast adds Upware suite of business apps

Comcast Corp. announced the [Upware](#) marketplace, a suite of cloud-based business solutions that can be purchased through one web portal. The Upware marketplace contains a list of third-party, cloud-based business applications in categories such as data backup, data security, and collaboration.

Services include:

- Data Backup :Carbonite (data backup), DigitalSafe (data backup), and Mozy (online backup).
- Data Security: Norton (security) and Websense (security).
- Collaboration: Box (online storage), Microsoft (Web collaboration), Soonr (online file sharing), and YouSendIt (document collaboration).

"We know small business owners and we know what tools they need to grow their businesses," said Kevin O'Toole, senior vice president. "Upware simplifies what can be a complex world of choices when evaluating cloud-based services."

North Carolina soft drink Cheerwine heads to Delaware

A popular drink the Carolinas is moving north. [Cheerwine](#), a cherry-flavored soft drink, has a toe hold in Delaware. A map of locations selling the soft drink indicates it is available in a Food Lion in Rehoboth Beach



and just across the state line at the Cracker Barrel restaurant in Elkton, Md.

The family-owned company also announced that the Miss Cheerwine contest is now open to

Delaware residents. The company is looking for “smart, charitable and effervescent young ladies between the ages of 21 and 29.”



In addition to Delaware, the contest is now open to residents in Alabama, Kentucky, West Virginia and Washington D.C., as well as other states in the south.

The goal of the company is to sell the soft drink nationwide in 2017, the company’s 100th anniversary,” says Joy Ritchie, assistant brand manager for Cheerwine. The company recently hired Pepsico veteran Dan Marin to lead the

company’s sales and distribution efforts

The contest will open on March 4, and the deadline for final submissions is April 5. Cheerwine judges will choose three finalists, who will each create a video introducing themselves to fans via the brand’s Facebook page. Public voting will determine the winner.

For more information on Miss Cheerwine, to vote, apply or view program guidelines and requirements, visit the Miss Cheerwine Search tab on Cheerwine’s Facebook page at [Facebook.com/Cheerwine](https://www.facebook.com/Cheerwine).

Cheerwine was launched in 1917 by L.D. Peeler, The brand is owned and distributed by the Carolina Beverage Corporation and Cheerwine Bottling Company in Salisbury, N.C.

The name came from the drink’s dark red color.



CLICK HERE TO SUBSCRIBE TO THE BUSINESS BULLETIN



Two charged with theft scheme at AstraZeneca

Two men have been arrested for theft and conspiracy charges after allegedly using AstraZeneca funds to pay for \$400,000 in improvements to a Hockessin home.

An investigation by the Attorney General's Special Investigations Unit determined that

Mitchell Guard, 45, a project engineer for AstraZeneca's Fairfax location, and David Ragolia, 55, a foreman for the DiSabatino Construction Co. and on-site manager for construction work at AstraZeneca location, conspired to direct money to home improvements at Guard's Hockessin home.

"Stealing is a crime with damaging consequences, whether the victim is an individual or a company, and we're acting to ensure that everyone obeys the law," Attorney General Beau Biden said in a release announcing the arrest.

The Attorney General's Office opened its investigation after receiving a report last year from AstraZeneca regarding financial transactions.

During that time, DiSabatino Construction and AstraZeneca had worked under a Master Services Agreement, with DiSabatino serving as the sole source contractor for construction at the AstraZeneca Fairfax campus. Guard initiated construction projects on-site through Ragolia, who assigned the work to DeSabatino employees and sub-contractors.

The investigation revealed that Ragolia, of Bear, instructed DiSabatino employees and other subcontractors to make home improvements to the Guard residence over a period of time, and that DiSabatino employees and sub-contractors were assigned to work full-time at the residence from March, 2010 through July, 2010 to complete the work.

Continued on Page 19



Trooper, State Police employee honored

At a ceremony at the Delaware State Troopers Association hall, Superintendent of the Delaware State Police Colonel Nathaniel McQueen Jr. announced the winners of the annual Trooper of the Year and Civilian of the Year awards.



Jubb

The Executive Staff selected Corporal **Joshua Jubb** from Troop 2 patrol as the 2012 Trooper of the Year.

Jubb began his career in October 2008, and in July 2009 was assigned to Troop 2 patrol in Glasgow.



Ralph

One example of his police work came on Dec. 16.

Jubb was investigating a vehicle crash just west of Glasgow when two citizens advised him that a nearby Wendy's restaurant was being robbed.

Jubb went to the Wendy's and observed the

two armed male suspects holding employees at gunpoint. Jubb retrieved his shotgun took a tactical position towards the rear of the Wendy's, watching both exits while communicating essential information to dispatchers and responding units.

Before backup arrived, the suspects fled from the restaurant and were confronted by Jubb. The suspects ignored his commands and fled on foot with Jubb in pursuit.

As Jubb closed the distance between himself and one of the suspects, he opted for a less-than-lethal use of force, used his TASER, apprehending the fleeing felon while transmitting a description of the other suspect. A short time later, assisting units apprehended the other suspect.

Selected as Civilian of the Year Award was **Eric Ralph** from Troop 4.

Ralph began his career with the Delaware State Police at Troop 4 in Georgetown in 1996 and has served the Division as an Equipment Mechanic III. He is responsible for the maintenance of 85 vehicles at Troop 4.

In addition to performing vehicle maintenance, he has been called upon to assist investigative units with examinations of vehicles involved in criminal

activity and fatal crashes. He does this despite dealing with medical problems.

Top real estate agent

Carolyn Rash of Lewes has been honored by *Delaware Today* in its selection of "Delaware Select Real Estate Agents."

"This is quite an honor for me. The fact that *Delaware Today* included me in its selection of "Delaware Select Real Estate Agents," signals that my constant effort to deliver excellent work has paid off. It is gratifying to be recognized in this way, Rash says.

American Registry also added Carolyn Rash to the "Registry of Business Excellence.

Cabinet members nominated

Gov. Jack Markell announced his nomination of recently retired Delaware State Police Superintendent Colonel **Robert Coupe** for Commissioner of Correction and attorney and former Education Policy Advisor **Jennifer Ranji** to be Secretary of the State Department of Services

Continued on next page

From previous page

for Children, Youth and Their Families.

Coupe served as Delaware State Police Superintendent from July 2009 until December 2012.



Coupe

He had 28 years of service to the State Police upon retirement. As Superintendent, he commanded 676 troopers and 270 civilian employees.

“Colonel Coupe is a proven manager, well-respected leader, and people person,” said Markell. “He earned accolades throughout his Division for creating a climate of trust through open and honest communication and transparency. I am pleased Colonel Coupe may continue to serve the state as a cabinet secretary with a critical public safety role.”

The Department of Correction is the second largest Executive branch agency in the State and the largest law enforcement agency in the state with over 2,500 employees.

Ranji served as Educational Policy Advisor in the

Office of Governor Markell from September 2009 to July 2012.

She was the lead staff person on Race to the Top and Early Childhood Race to the Top initiatives and played a leading role in developing the Governor’s education policy agenda, working closely with the Department of Education, the Department of Services for Children, Youth and Families, and other agencies and stakeholders.



Ranji

Earlier, Ranji was in private legal practice, served as Deputy Legal Counsel in the Office of Governor Thomas Carper and as Director of Legal Affairs for Family Court of the State of Delaware.

The State Department of Services for Children, Youth and their Families provides and manages a range of services for children who have experienced abandonment, abuse, adjudication, mental illness, neglect, or substance abuse. Its services include prevention, early intervention, assessment, treatment, permanency, and after care.




From page 17

The home improvements included a kitchen renovation, the addition of a sun room and 3-car garage, basement finishing, installation of new siding and windows, painting, and the purchase and installation of an HVAC unit, appliances, and bath fixtures.

Upon the completion of their work to the Guard residence, investigators learned that Ragolia directed subcontractors to submit their receipts and invoices to DiSabatino Construction Company. The investigation also revealed that Ragolia, in turn, submitted invoices for the materials and the labor performed at Guard’s residence to AstraZeneca.

In all, more than \$400,000 in improvements performed at Guard’s residence were billed to and ultimately paid by the pharmaceutical manufacturer before the scam was discovered. As a result of the investigation, arrest warrants were issued, charging both men with one count of Theft of more than \$100,000 and Conspiracy.

After being arraigned in JP Court #20, both men were released on \$6,000 unsecured bond. 

Editor's note: Business licenses are issued by the State of Delaware as a way to generate revenue are not used as a way to regulate business.

3 BLIND MICE LLC
 COMMERCIAL LESSOR 119 SANDY DR NEWARK DE 19713-1148

3 C DRILLING LLC CONTRACTOR-NON-RESIDENT 916 TOWN CTR DOYLESTOWN PA 18901-5182

3 CHARMS BAKERY INC
 WHOLESALER-FOOD PROCESSOR 718 E IVY DR SEAFORD DE 19973-1341

3 D INTERNET GROUP LLC
 PROFESSIONAL AND/OR PRSL SRVCS-UNCLASSIFIED 609 COLCHESTER CT MIDDLETOWN DE 19709-2139

3 GERMAY LLC
 COMMERCIAL LESSOR 3 GERMAY DR WILMINGTON DE 19804-1127

3 GUYS WASTE LLC DELAWARE
 DISPOSAL PROFESSIONAL AND/OR PERSONAL SERVICES 22320 BREAKERS TRL SEAFORD DE 19973-6675

3 ISLE SPICE INC 3 ISLE SPICE WHOLESALER-DRY GOOD APPAREL ETC. 102

INTERCHANGE BLVD NEWARK DE 19711-3549

3 MINDS TECHNOLOGIES INC PROFESSIONAL AND/OR PERSONAL SERVICES 8 ALLANDALE DR APT H5 NEWARK DE 19713-3139

3 R PAINTING & CONTRACTING CO CONTRACTOR-NON-RESIDENT 55 LAIRD AVE TINTON FALLS NJ 07753-6725

3 SEASONS LLC NON-RESIDENT CONTRACTOR/DEVELOPER 1/1/13 12/31/13 981 S BOLMAR ST STE A WEST CHESTER PA 19382-4517

301 PLAZA INC
 BOTTLE RECYCLING FEE RETAILER PETROLEUM, PRODUCTS, RETAILER-RESTAURANT 921 MIDDLETOWN WARWICK RD MIDDLETOWN DE 19709-6054

302 BRAZILIAN JIU JITSU
 PROFESSIONAL AND/OR PRSL SRVCS-UNCLASSIFIED 2401 OGLETOWN RD NEWARK DE 19711-6403

302 PROPERTIES LLC
 RESIDENT CONTRACTOR/DEVELOPER 201 NATHAN CT NEWARK DE 19711-3932

302 SPORTS
 ADVERTISING AGENCY 116 WINSTON AVE WILMINGTON DE 19804-1755

3060 CROWN LLC CROWN
 FRIED CHICKEN BOTTLE RECYCLING FEE 3060 NEW CASTLE AVE NEW CASTLE DE 19720-2248

30TH ST PROPERTIES LLC
 COMMERCIAL LESSOR 300 E 30TH ST WILMINGTON DE 19802-3202

313 HOLDINGS LLC
 PROFESSIONAL AND/OR PRSL SRVCS-UNCLASSIFIED 128 E MARKET ST GEORGETOWN DE 19947-1411

313 HOLDINGS LLC HUDSONS
 TAVERN & BILLIARDS RETAILER-FOOD (EXCEPT RESTAURANT) 128 E MARKET ST GEORGETOWN DE 19947-1411

315 SOUTH CHAPEL STREET
 COMMERCIAL LESSOR 315 S CHAPEL ST NEWARK DE 19711-5307

32 LAKE AVENUE INC
 RISTORANTE ZEBRA RETAILER-RESTAURANT PO BOX 349 REHOBOTH BEACH DE 19971-0349

3209 MILLER RD LLC
 COMMERCIAL LESSOR 3209 MILLER RD WILMINGTON DE 19802-2507 322 A

STREET LLC BPG REAL ESTATE
 COMMERCIAL LESSOR 322 A ST STE 300 WILMINGTON DE 19801-5354

325 E MAIN LLC NON-RESIDENT CONTRACTOR/DEVELOPER 1/1/12 12/31/14 6000 WOOLEN WAYNEWARK DE 19711-8543

325 EAST MAIN ASSOC LLC
 PARKING LOT/GARAGE 6000 WOOLEN WAY NEWARK DE 19711-8543

326 ASSOCIATES LP
 COMMERCIAL LESSOR 110 N DUPONT HWY NEW CASTLE DE 19720-3102

326 INC PROFESSIONAL AND/OR PRSL SRVCS-UNCLASSIFIED 1201 N ORANGE ST STE 700 WILMINGTON DE 19801-1186

33 WEST LLC RETAILER-RESTAURANT, BOTTLE RECYCLING FEE, 33 W LOOCKERMAN ST DOVER DE 19904-7350

3302 & ASSOCIATES LLC
 COMMERCIAL LESSOR 3302 CONCORD PIKE WILMINGTON DE 19803-5017

333 W 37 ST CORP
 PROFESSIONAL AND/OR PRSL SRVCS-UNCLASSIFIED 160 OLD WHARF RD OCEAN CITY MD 21842-4816

34 INDUSTRIAL BLVD LLC
 COMMERCIAL LESSOR 34 INDUSTRIAL BLVD NEW CASTLE DE 19720-2091

3400 PROPERTIES LLC
 COMMERCIAL LESSOR 19 SOUTHGATE BLVD NEW CASTLE DE 19720-2069

3511 PHILADELPHIA PIKE LLC COMMERCIAL LESSOR 3511 PHILADELPHIA PIKE CLAYMONT DE 19703-3106

3-5-7 MODEL LLC DARLA L HENRY & ASSOCIATES
 PROFESSIONAL AND/OR PERSONAL SERVICES 1040 COUNTRY HILL DR HARRISBURG, PA 17111-4655

36 BUILDERS INC
 RESIDENT CONTRACTOR/DEVELOPER, CONTRACTOR RESIDENT, COMMERCIAL LESSOR 16255 SUSSEX HWY BRIDGEVILLE 19933-2968

360 CONSTRUCTION INC
 EXCAVATING & DEMOLITION CONTRACTOR-NON-RESIDENT 181 POSSUM HOLLOW RD STE B POTTSTOWN PA 19464-3487

360 HEALTHCARE STAFFING LLC PROFESSIONAL SERVICES-EMPLOYMENT AGENT 1000

FIANNA WAYFORT SMITH ARK. 72919-9008

360 PROPERTY SOLUTIONS LLC PROFESSIONAL AND/OR PRSL SRVCS-UNCLASSIFIED 20684 JOHN J WILLIAMS HWY STE 4 LEWES DE 19958-4393

360 TRANSLATIONS INTL INC
 RECONCILIATION PURPOSE CODE 334 LINCOLN AVE N ELLISBURG NJ 08002-2343

360 VISIONS LLC
 PROFESSIONAL AND/OR PRSL SRVCS-UNCLASSIFIED 348 LAKESIDE DR LEWES DE 19958-8952

3608 ASSOCIATES LLC
 COMMERCIAL LESSOR 3608 LANCASTER PIKE WILMINGTON DE 19805-1509

3655 INCORPORATED
 PROFESSIONAL AND/OR PRSL SRVCS-UNCLASSIFIED 10 SNUFF MILL RD WILMINGTON DE 19807-1020

3702 N DUPONT HWY LLC
 COMMERCIAL LESSOR 29 HILL RD WILMINGTON DE 19806-2038

3704 KENNETT LLC
 COMMERCIAL LESSOR

Continued on next page

From previous page

3710 KENNETT PIKE
 WILMINGTON DE 19807-2157

38 RT 18 PARTNERS LLC
 COMMERCIAL LESSOR RT
 18 GEORGETOWN DE 19947

3BP PROPERTIES LLC
 COMMERCIAL LESSOR 1201
 BRIDGEVILLE HWYSEAFORD
 DE 19973-1613

3CONX CORP
 PROFESSIONAL AND/OR PRSL
 SRVCS-UNCLASSIFIED 180
 SHEPPARD AVE EAST
 TORONTO ONT. CANADA
 M2N3A4

3D AUTO REPAIR LLC
 PERSONAL SERVICE-MOTOR
 VEHICLE SERVICE
 16515 S DUPONT HWY
 HARRINGTON DE 19952-3183

3D ENVIRONMENTAL LLC
 PROFESSIONAL AND/OR
 PERSONAL SERVICES 702D
 NAYLOR MILL RD SALISBURY
 MD 21801-1114

3D EXHIBITS, INC.
 SALES REPRESENTATIVE 200
 CENTERPOINT BLVD NEW
 CASTLE DE 19720-4197

3-D FABRICATIONS INC

CONTRACTOR-RESIDENT
 100 GABOR DR NEWARK
 DE 19711-6629

3D MICROWAVE
 PROFESSIONAL AND/OR
 PERSONAL SERVICES 7795
 BETHEL RD LAUREL DE 19956-3921

3-D NAIL & SPA
 PERSONAL SERVICES-
 MANICURIST 31507 OAK
 ORCHARD RD MILTON DE
 19968

3D SERVICES LLC
 CONTRACTOR-RESIDENT
 2642 BIG OAK RD SMYRNA
 DE 19977-3373

3D SIGNS
 CONTRACTOR-NON-RESIDENT
 9633 LIBERTY RD STE L
 RANDALLSTOWN MD 21133-2435

3D TILE INC
 CONTRACTOR-RESIDENT
 30291 JAY PATCH RD
 SELBYVILLE DE 19975-3037

3GHC STUDIO
ARCHITECTURE, LLC
 PROFESSIONAL SERVICES -
 ARCHITECT 1/1/13 12/31/13
 112 PARK AVE # 2
 SWARTHMORE PA 19081-1724
 2010605436

3GHC STUDIO
ARCHITECTURE, LLC

PROFESSIONAL SERVICES -
 ARCHITECT 112 PARK AVE # 2
 SWARTHMORE PA 19081-1724

3-H COMPANY INC LAKE
FOREST MOBILE EST
 PERSONAL SERVICES-MOBILE
 HOME PARK LAKE FOREST
 PO BOX 950 FELTON DE 19943-0950

3-H COMPANY INC MOBILE
ESTATES MOTOR VEHICLE
 DEALER LAKE FOREST PO BOX
 950 FELTON DE 19943-0950

3H DEL INC BURGER KING
 #5190 RETAILER-RESTAURANT
 300 S MARYLAND AVE
 WILMINGTON DE 19804-1345

3J'S TIRE CENTER INC
 RETAILER-VARIOUS PRODUCTS
 3005 PHILADELPHIA PIKE STE B
 CLAYMONT DE 19703-2524

3J'S TIRE CENTER INC
 WHOLESALER-ANY PRODUCTS
 3005 PHILADELPHIA PIKE STE B
 CLAYMONT DE 19703-2524

3M BROTHERS POOL
 PLASTERING LLC
 CONTRACTOR-NON-
 RESIDENT 360 NEWTOWN RD
 WARMINSTER PA 18974-5369

3M COMPANY

PROFESSIONAL AND/OR
 PRSL SRVCS-UNCLASSIFIED
 CORPORATED TAXES 3 CENTER
 BLDG 224-5N SAINT PAUL MN
 55144-0001

3M COMPANY
 WHOLESALER-MACHINERY
 EQUIPMENT & SUPPLIES
 INCORPORATED TAXES
 PROFESSIONAL AND/OR
 PRSL SRVCS-UNCLASSIFIED 3
 CENTER BLDG 224-5N SAINT
 PAUL MN 55144-0001

3M HEALTH SYSTEMS INC
 PROFESSIONAL AND/OR PRSL
 SRVCS-UNCLASSIFIED3M
 CENTER # 224-2W15 SAINT
 PAUL MN 55144-1001

3POINT REAL ESTATE
SOLUTIONS LLC
 MERCANTILE OR COLLECTION
 AGENCY 7505 IRVINE CENTER
 DR STE 200 IRVINE CA 92618-3029

3RD FLOOR ENTERPRISES
LLC PROFESSIONAL AND/OR
 PRSL SRVCS-UNCLASSIFIED
 1109 N FRANKLIN ST
 WILMINGTON DE 19806-4301

3RD LEVEL IT PRO
 PROFESSIONAL AND/OR
 PERSONAL SERVICES 4 ROBERT
 RHETT WAY NEWARK DE 19702-1156

3RD WAVE BREWING CO LLC
 MANUFACTURER-ALCOHOLIC
 BEVERAGES 1/1/12 12/31/14
 1197 SMYRNA CLAYTON BLVD
 CLAYTON DE 19938
 2010117376

3V CONSULTING
 PROFESSIONAL AND/OR
 PERSONAL SERVICES
 1/1/12 12/31/14
 1013 TWEEDBROOK RD
 WILMINGTON DE 19810
 3022

4 B CONSTRUCTION
CORP NON-RESIDENT
 CONTRACTOR/DEVELOPER
 1780 BRIDGETOWN PIKE
 FSTRVL TRVOSE PA 19053-4261

4 C SYSTEMS LLC 4 C
SYSTEMS PROFESSIONAL
 AND/OR PRSL SRVCS-
 UNCLASSIFIED 410 ROCHELLE
 AVE WILMINGTON DE 19804-2118

4 PROS SOLUTIONS, INC
 PROFESSIONAL AND/OR
 PERSONAL SERVICES 200
 CENTENNIAL AVE STE
 200 PISCATAWAY NJ 08854-3950

4 RS AUTO SALES MOTOR
 VEHICLE DEALER 28230 GUM
 TREE RD DAGSBORO DE 19939-4409

4 SEA CREST INC TCBY
 BETHANY BEACH RETAILER-

RESTAURANT GARFIELD PKY
 BETHANY BEACH DE 19930

4 SEASONS PIZZA
 BOTTLE RECYCLING FEE 310 N
 MAIN ST BLDG D SMYRNA DE
 19977-1078

4 SHORE INC DOMINOS PIZZA
 BOTTLE RECYCLING FEE
 19266 COASTAL HWY UNIT 6
 REHOBOTH BCH DE 19971-6117

4 SHORE INC
 RETAILER-RESTAURANT 1/2/13
 12/31/13 19 S RACE
 ST GEORGETOWN DE
 19947-1907 2012607128

4 SHORE INC DOMINOS PIZZA
 RETAILER-RESTAURANT
 19266 COASTAL HWY UNIT 6
 REHOBOTH BCH DE 19971-6117

4 SHORE INC DOMINOS PIZZA
 BOTTLE RECYCLING FEE PIZZA
 RETAILER-RESTAURANT
 132 BROADKILL RD MILTON
 DE 19968-1008

4 TELECOMHELP INC
 PROFESSIONAL AND/OR PRSL
 SRVCS-UNCLASSIFIED 882 S
 MATLACK ST STE 109 WEST
 CHESTER PA 19382-4505