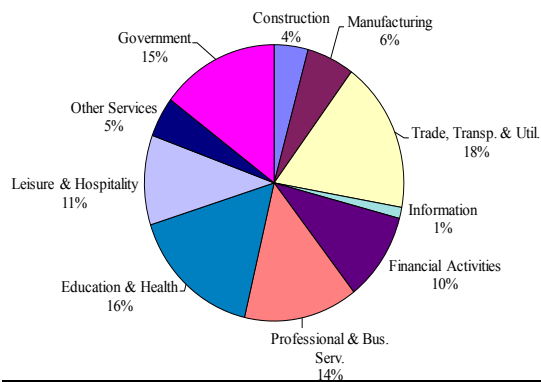


Delaware Employment Trends

- Delaware's unemployment rate continued to fall in December, dropping another 3/10ths to 6.2 percent. After rising slowly earlier in the year to peak at 7.4 percent in July, the rate fell as the number of unemployed residents dropped by 5,230 and the number employed rose by 3,080 in the second half of the year. The separate survey of employers in the state shows an increase of 5,800 jobs from July to December. This would appear to show that the two estimates, of resident employment and jobs in the state, are beginning to tell similar stories of faster economic growth.
- For all of 2013, their stories diverge. Employers report total job growth of 8,900 jobs since December 2012, and this is backed up by complete payroll reports. The number of employed residents fell by 2,730 over the same period. Delaware is not alone in this paradox; almost half of all states are in a similar position. Across our region (DE, MD, PA, NJ), there were 146,100 jobs gained with 41,900 fewer employed residents from Nov. 2012 to Nov. 2013. Annual revisions to be done soon should lead to increases in resident employment numbers.

Percent Distribution of Delaware Nonfarm Employment—December 2013



CONTACT: George Sharpley (302)761-8060

Please Visit Our Website at: www.oolmi.net

DELAWARE DEPARTMENT OF LABOR
Occupational and Labor Market Information
Post Office Box 9965
Wilmington, DE 19809-0965
(302)761-8069
www.oolmi.net

60-01-200

OFFICIAL BUSINESS
PENALTY FOR PRIVATE USE \$300

ATTENTION:
If your address has changed, please return this section (with corrections noted) to the above address. Thank you.

**D
E
L
A
W
A
R
E**

Monthly Labor Review

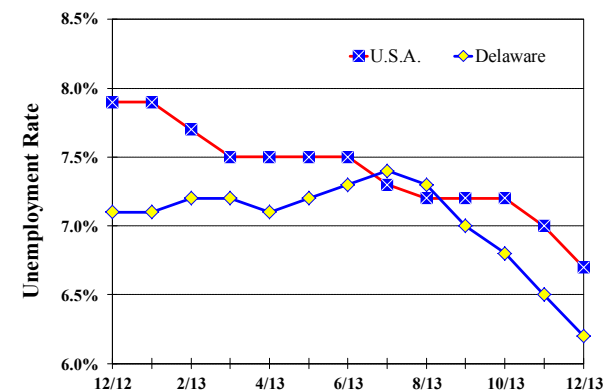
December 2013

*Delaware
Department
of Labor*

John J. McMahon, Jr.,
Secretary

Unemployment Rate Delaware and U.S.A.

December 2012– December 2013



Delaware Labor Force Trends

- Delaware's seasonally adjusted unemployment rate in December 2013 was 6.2%, down from 6.5% in November 2013. There were 27,400 unemployed Delawareans in December 2013, compared to 31,600 in December 2012. The U.S. unemployment rate was 6.7% in December 2013, down from 7.0% in November 2013. In December 2012, the U.S. unemployment rate was 7.9, while Delaware's rate was 7.1.
- In December 2013, seasonally adjusted nonfarm employment was 430,600, up from 430,200 in November 2013. Since December 2012, Delaware's total nonfarm jobs have increased by a net gain of +8,900, a rise of 2.1%. Nationally, jobs during that period increased 1.6%.

Delaware Civilian Labor Force

	Dec. 2013	Nov. 2013	Dec. 2012
Civilian Labor Force	439,500	439,100	446,400
Employment	412,100	410,700	414,800
Unemployment	27,400	28,400	31,600
Unemployment Rate %	6.2	6.5	7.1
U.S. Unemployment Rate %	6.7	7.0	7.9

Source: Delaware Dept. of Labor in cooperation with the U.S. Dept. of Labor, Bureau of Labor Statistics.

Area Unemployment Rates (%)

	Dec. 2013	Nov. 2013	Dec. 2012
New Castle County	5.7	5.7	6.7
Wilmington	8.3	8.7	9.9
Newark	5.3	5.1	5.6
Kent County	6.0	6.0	7.2
Dover	7.1	7.2	8.3
Sussex County	6.4	6.1	7.6

Note: Area rates are not seasonally adjusted.

Source: Delaware Dept. of Labor in cooperation with the U.S. Dept. of Labor, Bureau of Labor Statistics.

Delaware Nonfarm Employment— Seasonally Adjusted (in 000s)

December 2012—December 2013

INDUSTRY GROUP	Dec. 2013	Nov. 2013	Over the Month Change	Over the Year Change†
TOTAL NONAG. EMP.	430.6	430.2	0.4	8.9
CONSTRUCTION	18.2	18.4	-0.2	-0.2
MANUFACTURING	25.5	25.5	0.0	-0.2
Durable Goods *	9.4	9.4	0.0	-0.3
Nondurable Goods	16.4	16.4	0.0	0.1
TRADE, TRANSP., & UTIL.	76.2	75.8	0.4	0.0
Wholesale Trade	12.2	12.2	0.0	-0.1
Retail Trade	51.0	50.5	0.5	-0.1
Transp. & Utilities	13.0	13.1	-0.1	0.2
INFORMATION	5.6	5.6	0.0	0.2
FINANCIAL ACTIVITIES	44.5	44.2	0.3	2.0
PROF. & BUS. SERV.	61.1	61.8	-0.7	3.2
EDUCATION & HEALTH	70.7	70.5	0.2	1.7
LEISURE & HOSPITALITY	45.2	44.7	0.5	1.8
OTHER SERVICES	20.2	20.2	0.0	0.3
GOVERNMENT	63.4	63.5	-0.1	0.1
Federal Government *	5.5	5.4	0.1	-0.1
State Government	31.6	31.5	0.1	-0.1
Local Government	26.3	26.3	0.0	0.3

*Industries are not seasonally adjusted.

† Annual changes are not seasonally adjusted.

Details may not add up due to rounding and seasonal adjustment.

Source: U.S. Department of Labor, Bureau of Labor Statistics.

Technical note: Methodological changes mandated by the U.S. Bureau of Labor Statistics (BLS) may result in larger month-to-month changes that are the result of statistical sampling error and not actual changes in employment.

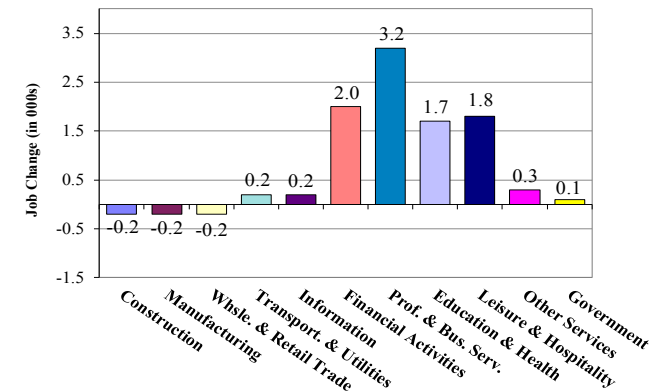
Consumer Price Index

All Urban Consumers

	Percent Change to Dec. 2013 from:		
	Nov. 2013	Oct. 2013	Dec. 2012
U.S. City Average	0.0	-0.2	1.5
Phila.-Wilm.-Atlantic City*	NA	0.1	1.2

* Data are published on a bi-monthly basis.

Delaware Over-The-Year Job Change December 2012—December 2013



Hours & Earnings All Employee (Total Private)

	Dec. 2013	Nov. 2013	Dec. 2012
Weekly Earnings	\$702.86	\$705.02	\$756.51
Weekly Hours	32.6	32.4	33.4
Hourly Earnings	\$21.56	\$21.76	\$22.65

Source: Delaware Dept. of Labor in cooperation with the U.S. Dept. of Labor, Bureau of Labor Statistics.

Delaware Annual Net Job Change 1992 to 2012

