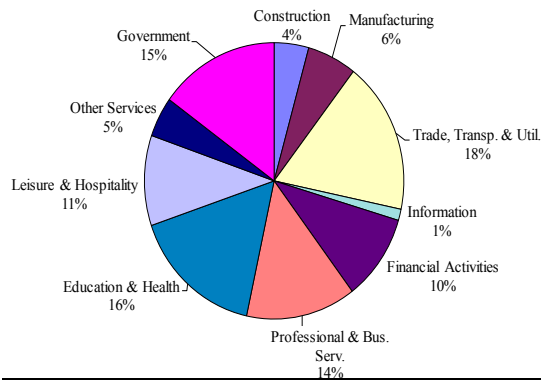


## Delaware Employment Trends

- There was a slight decline of 300 jobs from March to April, but only after the March jobs total was revised upward by 1,000 from last month's preliminary report. The revisions were spread across a number of industries, with the upward revision of 400 jobs in Financial Activities being the largest. There is little doubt that the Delaware economy is growing. Currently, job growth from a year ago stands at 7,600, a 1.8 percent growth rate. This pace that will be difficult to maintain throughout the entire year.
- There were revisions on the household side as well. The number of employed state residents was revised upward by 100, which was enough to lower March's unemployment rate to 7.2 percent, down by a tenth from the 7.3 percent reported last month. Although the number of employed residents rose by 300 in April, and the number unemployed fell by 400, April's unemployment rate remained at 7.2 percent. One-tenth of one percent of the state's labor force equals 446 people. The original March unemployment rate was just over 7.25 percent, which rounded up to 7.3 percent; the small revision moved it to just below 7.25 percent.

## Percent Distribution of Delaware Nonfarm Employment—April 2013



CONTACT: George Sharpley (302)761-8060

Please Visit Our Website at: [www.oolmi.net](http://www.oolmi.net)

DELAWARE DEPARTMENT OF LABOR  
Occupational and Labor Market Information  
Post Office Box 9965  
Wilmington, DE 19809-0965  
(302)761-8069  
[www.oolmi.net](http://www.oolmi.net)

60-01-200

OFFICIAL BUSINESS  
PENALTY FOR PRIVATE USE \$300

**ATTENTION:**  
If your address has changed, please return this section (with corrections noted) to the above address. Thank you.

**D  
E  
L  
A  
W  
A  
R  
E**

# Monthly Labor Review

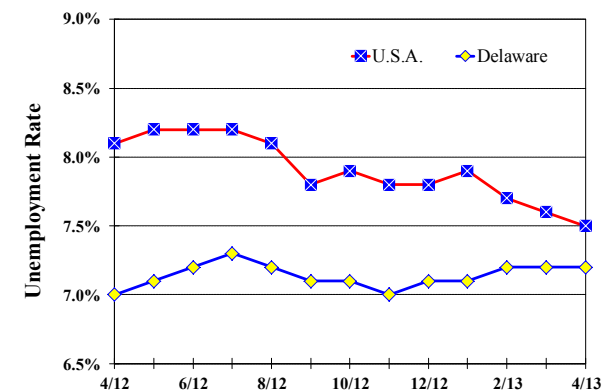
April 2013

Delaware  
Department  
of Labor

John J. McMahon, Jr.,  
Secretary

## Unemployment Rate Delaware and U.S.A.

April 2012– April 2013



## Delaware Labor Force Trends

- Delaware's seasonally adjusted unemployment rate in April 2013 was 7.2%, unchanged from a revised 7.2% in March 2013. There were 31,900 unemployed Delawareans in April 2013, compared to 31,100 in April 2012. The U.S. unemployment rate was 7.5% in April 2013, down from 7.6% in March 2013. In April 2012, the U.S. unemployment rate was 8.1%.
- In April 2013, seasonally adjusted nonfarm employment was 424,400, down from 424,700 in March 2013. Since April 2012, Delaware's total nonfarm jobs have increased by a net gain of +7,600, a rise of 1.8%. Nationally, jobs during that period increased 1.6%.

## Delaware Civilian Labor Force

	Apr. 2013	Mar. 2013	Apr. 2012
Civilian Labor Force	445,700	445,800	443,200
Employment	413,800	413,500	412,100
Unemployment	31,900	32,300	31,100
Unemployment Rate %	7.2	7.2	7.0
U.S. Unemployment Rate %	7.5	7.6	8.1

Source: Delaware Dept. of Labor in cooperation with the U.S. Dept. of Labor, Bureau of Labor Statistics.

## Area Unemployment Rates (%)

	Apr. 2013	Mar. 2013	Apr. 2012
<b>New Castle County</b>	6.8	7.1	6.7
Wilmington	10.0	10.0	9.3
Newark	5.7	5.6	5.3
<b>Kent County</b>	7.3	7.9	7.3
Dover	8.5	9.0	8.6
<b>Sussex County</b>	7.3	8.1	7.0

Note: Area rates are not seasonally adjusted.

Source: Delaware Dept. of Labor in cooperation with the U.S. Dept. of Labor, Bureau of Labor Statistics.

## Delaware Nonfarm Employment— Seasonally Adjusted (in 000s)

April 2012—April 2013

INDUSTRY GROUP	Apr. 2013	Mar. 2013	Over the Month Change	Over the Year Change†
<b>TOTAL NONAG. EMP.</b>	424.4	424.7	-0.3	7.6
<b>CONSTRUCTION</b>	18.3	18.5	-0.2	0.2
<b>MANUFACTURING</b>	26.1	26.0	0.1	0.2
Durable Goods *	9.5	9.5	0.0	-0.2
Nondurable Goods	16.5	16.6	-0.1	0.4
<b>TRADE, TRANSP., &amp; UTIL.</b>	75.7	75.7	0.0	0.1
Wholesale Trade	12.1	12.5	-0.4	-0.4
Retail Trade	50.6	50.2	0.4	-0.1
Transp. & Utilities	13.0	13.0	0.0	0.6
<b>INFORMATION</b>	5.6	5.5	0.1	0.1
<b>FINANCIAL ACTIVITIES</b>	42.9	43.1	-0.2	1.4
<b>PROF. &amp; BUS. SERV.</b>	58.1	58.5	-0.4	2.7
<b>EDUCATION &amp; HEALTH</b>	69.4	69.2	0.2	1.8
<b>LEISURE &amp; HOSPITALITY</b>	44.8	44.4	0.4	0.7
<b>OTHER SERVICES</b>	19.9	19.8	0.1	0.4
<b>GOVERNMENT</b>	63.6	64.0	-0.4	0.0
Federal Government *	5.5	5.5	0.0	-0.2
State Government	32.0	32.1	-0.1	-0.3
Local Government	26.2	26.4	-0.2	0.5

\*Industries are not seasonally adjusted.

† Annual changes are not seasonally adjusted.

Details may not add up due to rounding and seasonal adjustment.

Source: U.S. Department of Labor, Bureau of Labor Statistics.

Technical note: Methodological changes mandated by the U.S. Bureau of Labor Statistics (BLS) may result in larger month-to-month changes that are the result of statistical sampling error and not actual changes in employment.

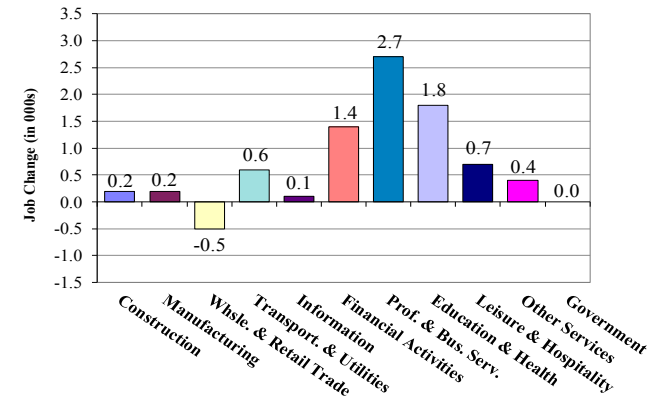
## Consumer Price Index

All Urban Consumers

	Percent Change to Apr. 2013 from:		
	Mar. 2013	Feb. 2013	Apr. 2012
<b>U.S. City Average</b>	-0.1	0.2	1.1
<b>Phila.-Wilm.-Atlantic City*</b>	NA	0.1	1.1

\* Data are published on a bi-monthly basis.

## Delaware Over-The-Year Job Change April 2012—April 2013



## Hours & Earnings All Employee (Total Private)

	Apr. 2013	Mar. 2013	Apr. 2012
<b>Weekly Earnings</b>	\$730.60	\$740.66	\$734.60
<b>Weekly Hours</b>	32.5	32.7	33.3
<b>Hourly Earnings</b>	\$22.48	\$22.65	\$22.06

Source: Delaware Dept. of Labor in cooperation with the U.S. Dept. of Labor, Bureau of Labor Statistics.

## Delaware Annual Net Job Change 1992 to 2012

